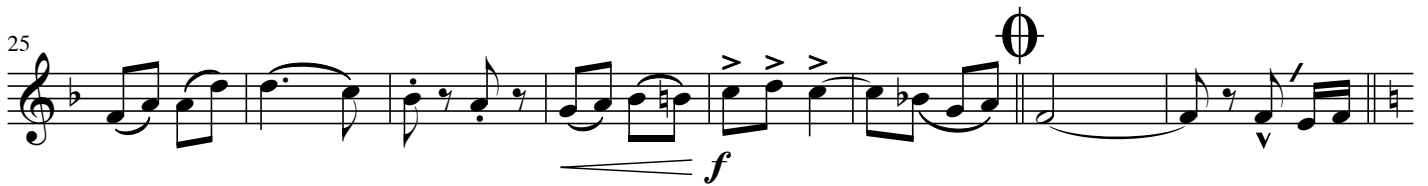
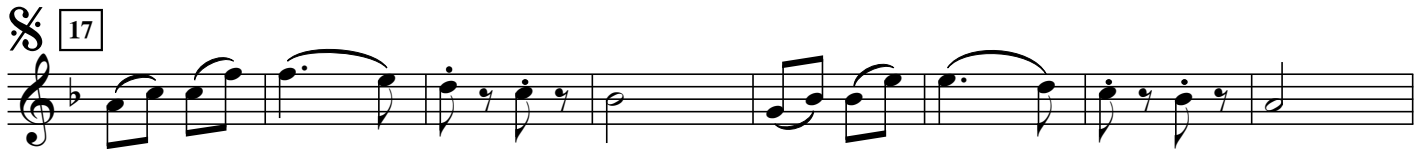
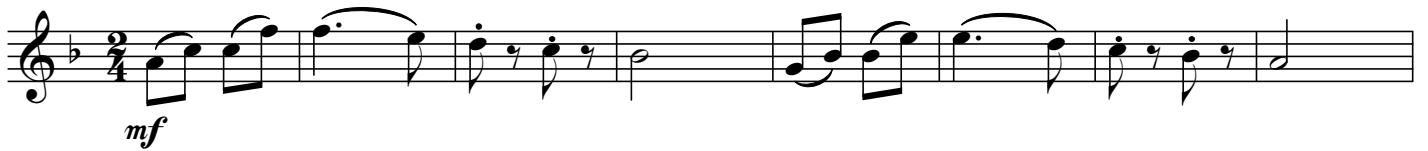


B♭ Flügelhorn 1

**Der alte Michel**  
Polka

Michael Kuhn



# Der alte Michel

Polka

Musical score for 'Der alte Michel' (measures 1-32). The score is in 2/4 time and B-flat major. It features three staves: Trumpet (Trp.), Flute (Flgh.), and Bass. Dynamics include *mf* and *f*. A section starting at measure 17 is marked with a repeat sign and the number 17.

Musical score for 'Der alte Michel' (measures 33-46). This section includes a 'Solo' for the Flute (Flgh.) starting at measure 38. It features a section starting at measure 33 marked with a repeat sign and the number 33. Dynamics include *f* and *mf*. The section concludes with the instruction 'D. S. al  $\oplus - \oplus$ '.

Musical score for 'Der alte Michel' (measures 47-65). This section is marked 'TRIO' at the beginning. It features three staves: Trumpet (Trp.), Flute (Flgh.), and Bass. Dynamics include *mf-f*, *f*, and *mf*. There are '1.x tacet' markings for the Flute and Tenor/Baritone parts. A section starting at measure 60 is marked with a repeat sign and the number 60.

Musical score for 'Der alte Michel' (measures 66-88). This section includes a 'Soli' for the Flute (Flgh.) starting at measure 76. It features a section starting at measure 76 marked with a repeat sign and the number 76. Dynamics include *f*, *mf*, and *mf cresc.*. The section concludes with the instruction 'D. S. al Fine'.